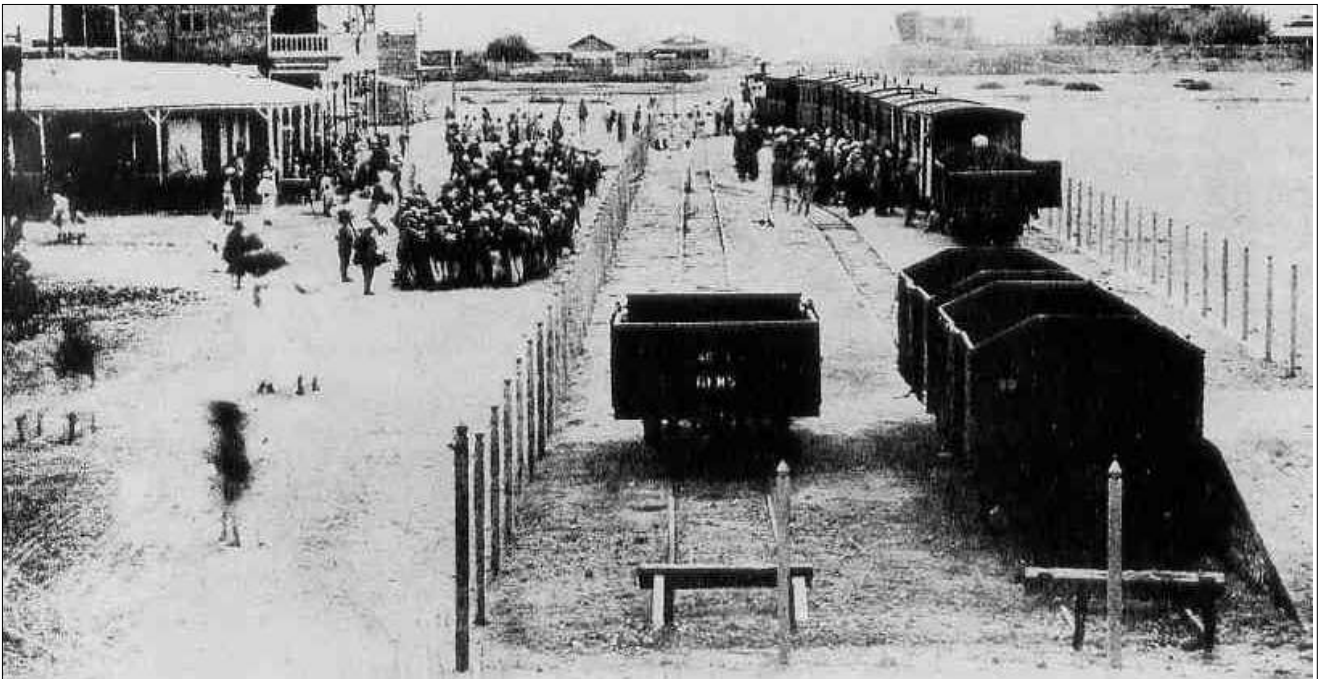


The opening of the railway line from Abdel Khader, Massawa to Sa'ati, to celebrate the opening of the line for passengers. Probably 1st April 1889. Notice that all the Italians are soldiers, as this was essentially a military line, conveying troops to the forts at Sa'ati. This event occurred just after the death of Emperor Yohannes, so the Italians were preparing to move beyond Sa'ati into the hinterland. This woodcut appeared in an Italian newspaper called L'illustrazione Italiana dated 12th May 1889.

Collection Marco Signoretto



Massawa Abdel Khader station 1889. The Italian caption describes this as 'fort and station. Troops departing for the plateau.' The station buildings in this photograph are nothing like the grand buildings featured in other photos of the period. This photo is likely to have been taken prior to the main Massawa station being moved from Abdel Khader to Taulud.

Courtesy of Stefano Pettini